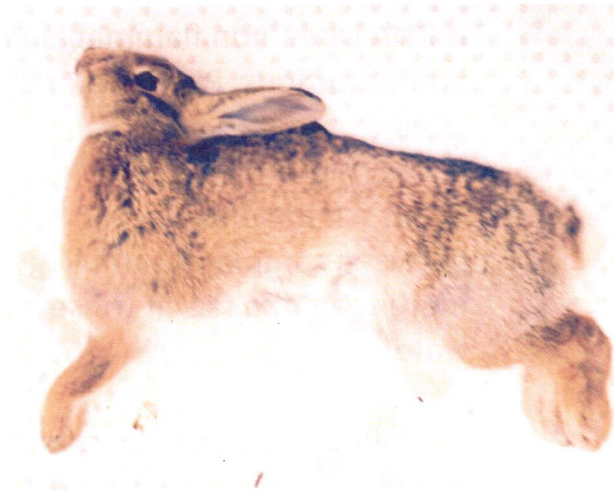


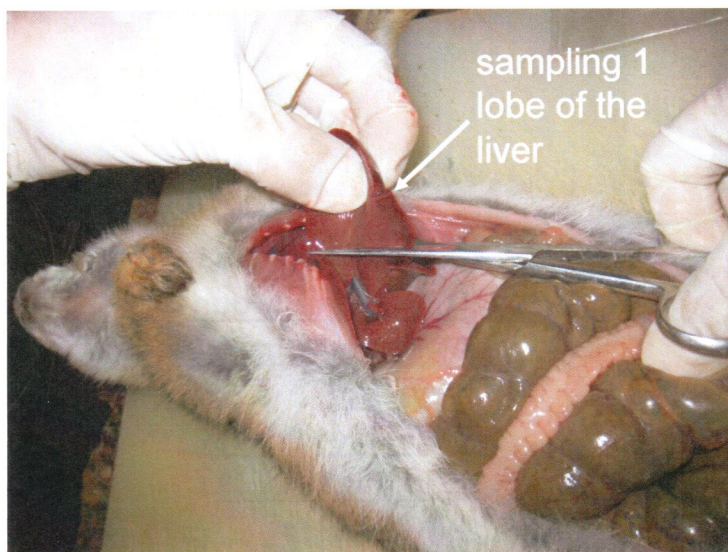
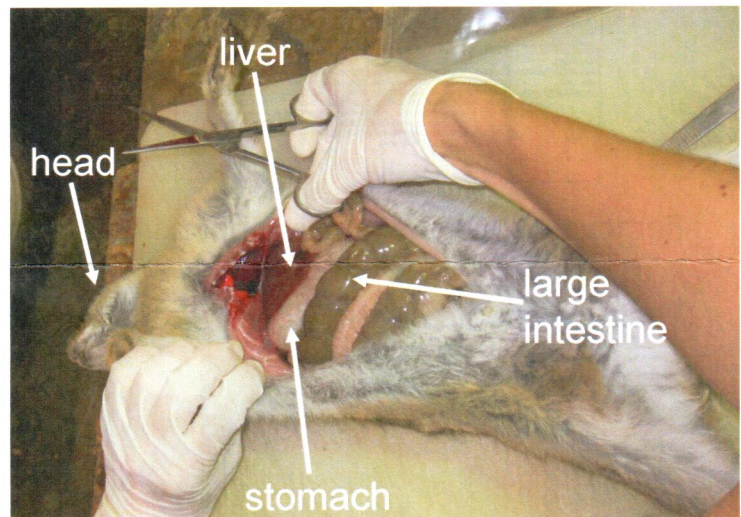
Collecting liver samples from rabbits that died from RHDV



Typical posture of a rabbit that died from RHDV:

- No outward signs of disease or injury
- Lying on its side with legs stretched out and head tilted backwards

1. Open up rabbit and locate liver



2. Remove part of a liver lobe

3. Cut off a small piece of liver tissue into pre-filled container



The liquid in the collection vials is RNA Later, non flammable and non-hazardous. Please refer to label.

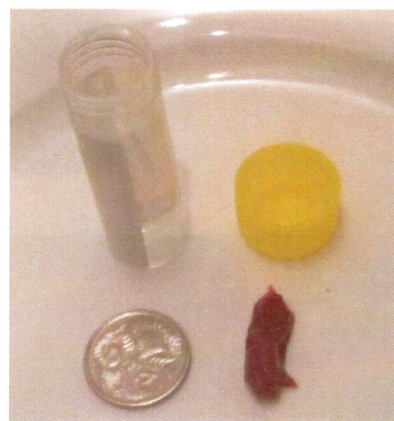
Clean scissors thoroughly between samples if sampling more than one rabbit (rinse with water and wipe)

Once in the fixative the sample is stable at Room Temperature. It does not need to be refrigerated during transport

WARNING		GHS Codes	
RNALATER		Not Applicable	
Hazard Codes H302 H312 H332		Hazard Codes H302 H312 H332	
Harmful if swallowed	Use only outdoors or in a well-ventilated area. Avoid breathing dust/vapours/spray. Do not eat, drink or smoke when using this product. Wear protective gloves/protective clothing/eye protection/face protection. Specific measures (see advice on the label). Wash contaminated clothing before reuse. IF SWALLOWED: Call a POISON CENTER or doctor/physician if you feel unwell. IF ON SKIN: Wash with plenty of soap and water. IF INHALED: Remove victim to fresh air and keep at rest in a position comfortable for breathing. Rinse mouth. Dispose of contents/container in accordance with local regulations. See SDS for full list of P phrases.		
Harmful in contact with skin			
Harmful if inhaled			

Remove a small piece only, approximately half a gram is sufficient (5mm x 5mm x 10 mm)

The tube should not flow over when you add the sample:



4. Label tube with

- RHDV
- Location
- State
- Date



5. Send to:

CSIRO Black Mountain
Attn: Nina Huang/Ros
Mourant
11 Clunies Ross St
Acton, ACT, 2601

With a submission form

